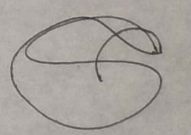


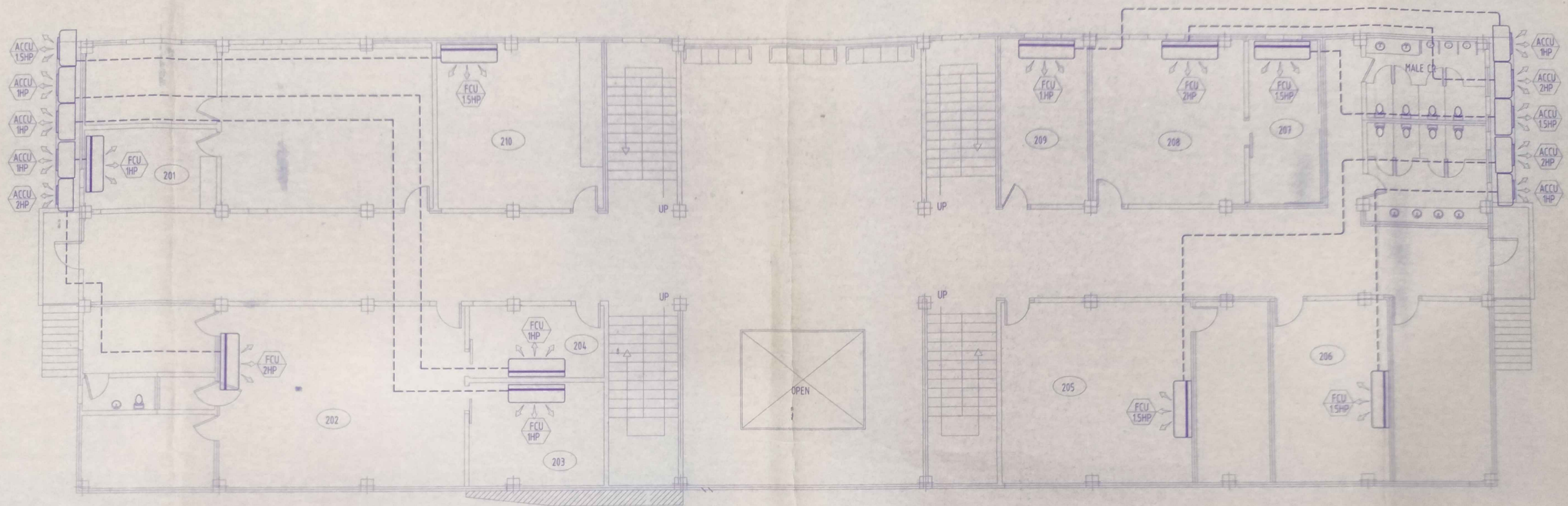
THIRD FLOOR AIR CONDITIONING LAY-OUT

THIRD FLOOR																					
ROOM No.	AREA (sq.m.)	TYPE	SQ. FT. PER PERSON	UNIT DESIGNATION	NO. OF UNITS	MOUNTING	AIR COIL CONDITION			ELECT. CHARACTERISTICS			OUTDOOR UNIT								
							CALC. COOLING CAPACITY (BTU/HR)	CALC. COOLING CAPACITY (HP)	CONDENSATE DRAIN PIPE SIZE (mmφ)	V	P	H _z	UNIT DESIGNATION	SELECTED COOLING CAP. (HP)	ELECT. CHARACTERISTICS			REFRIGERANT LINE		REFRI GERANT	
														V	P	H _z	SUCTION LINE	DISCHARGE LINE			
	52.17	LOBBY	20	FCU 2.5	2	WALL MOUNTED	47,201.48	5.24	25	230	1	60	ACCU 2.5	2.5	230	1	60	5/8	3/8	R410A	
NOT ENCLOSED (NO DESIGNED ACU'S AND VENTILATION FAN)																					
	195.48	GROUND FLOOR CORRIDOR	40	FCU 2.5	6	WALL MOUNTED	150,561.20	16.73	25	230	1	60	ACCU 2.5	2.5	230	1	60	5/8	3/8	R410A	
	23.06	REST ROOM VESTIBULE	22	FCU 2.5	1	WALL MOUNTED	26,299.70	2.26	25	230	1	60	ACCU 2.5	2.5	230	1	60	5/8	3/8	R410A	
	16.33	MEN'S REST ROOM																			
	4.52	PWD REST ROOM																			
	1.62	J/C																			
	15.57	WOMEN'S REST ROOM																			
	301	49.00	OFFICE	35	FCU 2.0	2	WALL MOUNTED	38,682.28	4.30	25	230	1	60	ACCU 1.5	1.5	230	1	60	1/2	1/4	R410A
	302	49.00	OFFICE	35	FCU 2.0	2	WALL MOUNTED	38,682.28	4.30	25	230	1	60	ACCU 2.5	2.5	230	1	60	5/8	3/8	R410A

TWO EXHAUST FANS @ 120 CFM EACH

ONE EXHAUST FAN @ 120 CFM





SECOND FLOOR AIR CONDITIONING LAY-OUT

GROUND FLOOR																				
ROOM No.	AREA (sq.m.)	TYPE	SQ. FT. PER PERSON	UNIT DESIGNATION	NO. OF UNITS	MOUNTING	AIR COIL CONDITION			ELECT. CHARACTERISTICS			OUTDOOR UNIT							
							CALC. COOLING CAPACITY (BTU/HR)	CALC. COOLING CAPACITY (HP)	CONDENSATE DRAIN PIPE SIZE (mmφ)	V	P	Hz	UNIT DESIGNATION	SELECTED COOLING CAP. (HP)	ELECT. CHARACTERISTICS			REFRIGERANT LINE		REFRI GERANT
														V	P	Hz	SUCTION LINE	DISCHARGE LINE		
52.17		LOBBY	20	FCU 2.5	2	WALL MOUNTED	47,201.48	5.24	25	230	1	60	ACCU 2.5	2.5	230	1	60	5/8	3/8	R410A
NOT ENCLOSED (NO DESIGNED ACU'S AND VENTILATION FAN)																				
195.48		GROUND FLOOR CORRIDOR	40	FCU 2.5	6	WALL MOUNTED	150,561.20	16.73	25	230	1	60	ACCU 2.5	2.5	230	1	60	5/8	3/8	R410A
23.06		REST ROOM VESTIBULE	22	FCU 2.5	1	WALL MOUNTED	20,299.70	2.26	25	230	1	60	ACCU 2.5	2.5	230	1	60	5/8	3/8	R410A
16.33		MEN'S REST ROOM																		
4.52		PWD REST ROOM																		
1.62		J/C																		
15.57		WOMEN'S REST ROOM																		
TWO EXHAUST FANS @ 120 CFM EACH																				
ONE EXHAUST FAN @ 120 CFM																				
101	13.00	OFFICE	35	FCU 1.0	1	WALL MOUNTED	10,262.64	1.14	25	230	1	60	ACCU 1.5	1.5	230	1	60	1/2	1/4	R410A
102	24.00	OFFICE	35	FCU 2.0	1	WALL MOUNTED	18,946.42	2.11	25	230	1	60	ACCU 2.5	2.5	230	1	60	5/8	3/8	R410A
103	16.40	OFFICE	35	FCU 1.0	1	WALL MOUNTED	12,946.72	1.44	25	230	1	60	ACCU 2.5	2.5	230	1	60	5/8	3/8	R410A
104	11.00	OFFICE	35	FCU 1.0	1	WALL MOUNTED	8,683.78	0.96	25	230	1	60	ACCU 2.0	2.0	230	1	60	1/2	1/4	R410A
105	9.70	OFFICE	35	FCU 1.0	1	WALL MOUNTED	7,637.51	0.85	25	230	1	60	ACCU 2.0	2.0	230	1	60	1/2	1/4	R410A
106	12.00	OFFICE	35	FCU 1.0	1	WALL MOUNTED	9,473.21	1.05	26	231	2	61	ACCU 2.1	3.0	231	2	61	1/3	1/5	R411A
107	19.00	OFFICE	35	FCU 1.5	1	WALL MOUNTED	14,999.25	1.67	25	230	1	60	ACCU 2.5	2.5	230	1	60	5/8	3/8	R410A
108	35.00	OFFICE	35	FCU 2	2	WALL MOUNTED	43,418.88	4.82	25	230	1	60	ACCU 1.5	1.5	230	1	60	1/2	1/4	R410A
109	20.00	OFFICE	35	FCU 1.5	1	WALL MOUNTED	15,788.68	1.75	25	230	1	60	ACCU 1.0	1	230	1	60	3/8	1/4	R410A
110	19	OFFICE	35	FCU 1.5	1	WALL MOUNTED	14,999.25	1.67	25	230	1	60	ACCU 2.5	2.5	230	1	60	5/8	3/8	R410A
111	24	OFFICE	35	FCU 2.0	1	WALL MOUNTED	18,946.42	2.11	25	230	1	60	ACCU 1.0	1	230	1	60	3/8	1/4	R410A
112	12	OFFICE	35	FCU 1.0	1	WALL MOUNTED	9,473.21	1.05	25	230	1	60	ACCU 2.5	2.5	230	1	60	5/8	3/8	R410A
113	12	OFFICE	35	FCU 1.0	1	WALL MOUNTED	9,473.21	1.05	25	230	1	60	ACCU 2.5	2.5	230	1	60	5/8	3/8	R410A