









RECOMMENDING APPROVAL:

APPROVED:

BUILDING OFFICIAL \_\_\_\_\_ DATE \_\_\_\_\_

RECOMMENDING APPROVAL:

ELECTRONIC

HEAD \_\_\_\_\_ DATE \_\_\_\_\_

**FIRE ALARM SYSTEM**

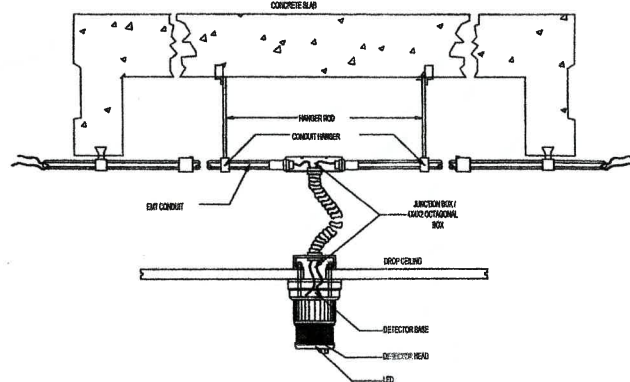
- NON-ADDRESABLE FIRE ALARM CONTROL PANEL
- MAXIMUM RADIUS ALLOWED PER SMOKE DETECTOR 10.0 M. EACH ROOM SHOULD HAVE SMOKE DETECTOR
- PROVIDE HEAT DETECTOR AT KITCHEN AREA.
- SMOKE DETECTOR SHOULD BE INSTALLED AS PER NFPA STANDARD AND FIRE CODE OF THE PHILIPPINES.
- DO NOT REDUCE EXISTING NUMBER OF SMOKE DETECTOR PROVISION AT SITE
- USED PVC FOR ELECTRICAL PIPES
- PROVIDE AT LEAST ONE (1) UNIT DETECTOR FOR ENCLOSED ROOM.

**LEGEND**

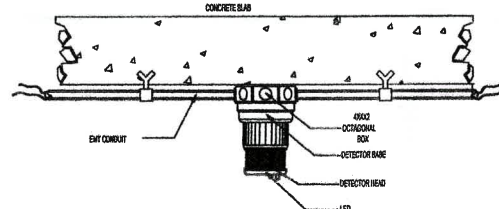
- |  |  |  |
|--|--|--|
|  | SMOKE DETECTOR (PHOTO ELECTRIC)                      | (+) - RED  |
|  | HEAT DETECTOR  | (-) - BLACK  |
|  | ALARM BELL   | EOLD END OF LINE OF DETECTION  |
|  | MANUAL PUSH/PULL STATION W/ FIREMAN'S TELEPHONE JACK | EOLB END OF LINE OF BELL   |
|  | ANNUNCIATOR PANEL                                    | EOLMP/B END OF LINE OF FIREMAN'S TELEPHONE JACK AND MANUAL PUSH/PULL STATION |
|  | RISER  | Alarm Bell Wiring Conduit  |
|  | FIRE ALARM CONTROL PANEL (FACP)                      | Fireman's Tel Jack Wiring Circuit  |
|  |  | Manual Push Station and Detectors Wiring Circuit                             |
|  |  | Sprinkler Alarm Control Panel (SACP)   |
|  |  | PULLBOX  |

**ALARM BELL**

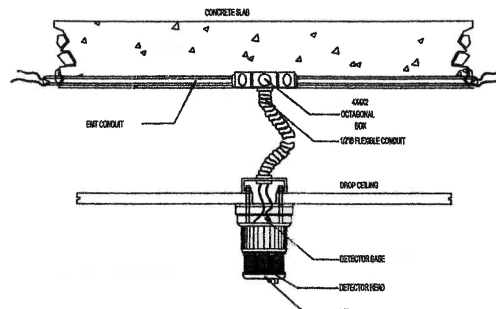
- (+) - BLUE
- (-) - WHITE



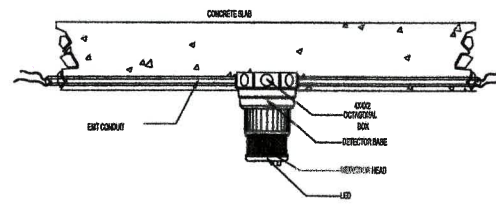
DETECTOR, CONDUIT, HANGERS, CONNECTORS AND JUNCTION BOXES, MOUNTING DETAIL



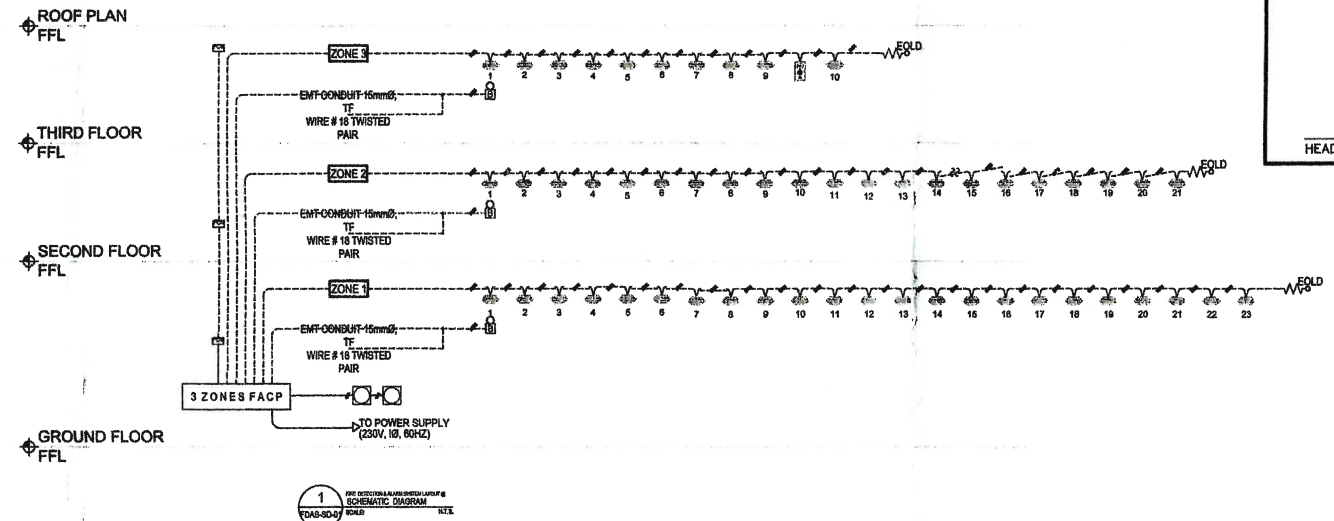
DETECTOR MOUNTING DETAIL WITH EXPOSED CONDUITS



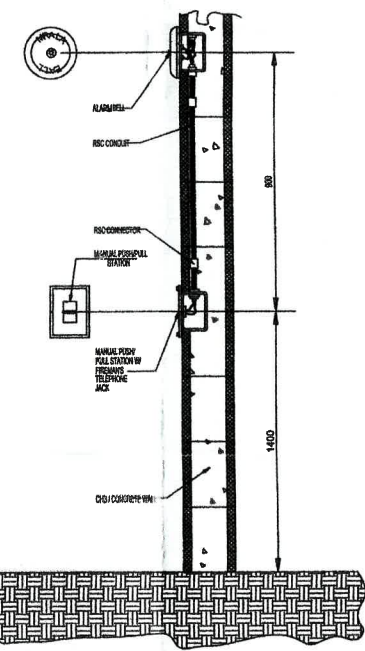
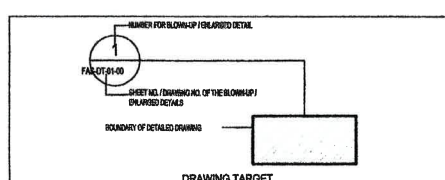
DETECTOR MOUNTING DETAIL ON DROP CEILING WITH CONDUITS EMBEDDED



DETECTOR MOUNTING DETAIL WITH CONDUITS EMBEDDED



DRAWING INDEX	
SHEET NO.	CONTENTS
GENERAL DRAWINGS	
FAS-SH-01	DRAWING INDEX & TARGET, VICINITY MAP, FIRE ALARM SYSTEM, DETECTOR INSTALLATION DETAILS, LEGEND & SYMBOL, BIPS INSTALLATION DETAILS, SCHEMATIC DIAGRAM & SITE DEVT PLAN
FAS-02	THREE STOREY PLAN FIRE ALARM SYSTEM LAYOUT @ GROUND FLOOR PLAN
FAS-03	THREE STOREY PLAN FIRE ALARM SYSTEM LAYOUT @ SECOND FLOOR PLAN
FAS-04	THREE STOREY PLAN FIRE ALARM SYSTEM LAYOUT @ THIRD FLOOR PLAN



EVACUATION HORN, MANUAL PUSH STATION, AND FIREMAN'S TEL. JACK MOUNTING DETAIL

FROM THE OFFICE OF: <b>ENGR. VICTOR C. NAVARRO</b> PROFESSIONAL ELECTRONIC ENGINEER	R.A. 9266 (Art. IV, Sec.33)	REG. NO. 0432	SEAL	PROJECT NO.	PROJECT TITLE:	APPROVED AS TO PLAN:	SHEET CONTENTS:	SHEET NO.
ADDRESS: PARDO, CEBU CITY	Drawings and specifications & other contract documents duly signed, stamped or sealed, as instruments of service are intellectual property & documents of the Architect, whether the object for w/c they are made executed or not. It shall be unlawful for any person to duplicate or to make copies of the said documents for the use in the repetition of & for other projects or buildings, whether executed partly or in a whole w/o the written consent of architect or author of said docs.	DATE: 05-24-2010 PTR NO. 1640868 DATE: 01-04-2019 T I N: 148-728-912		REVISION NO. : DRAWN BY: AMIL DATE CHECKED BY	PROPOSED: <b>PROPOSED CONSTRUCTION OF ADMINISTRATION BUILDING</b> LOCATION: BRGY. COGON, DIPOLOG CITY	OWNER: <b>ENGR. LOUIE C. JAMORA PAE.MSc</b> OWNER	GENERAL NOTES SCHEMATIC LAYOUT PLAN LEGENDS AND SYMBOLS DRAWING INDEX	FDAS 01 01