
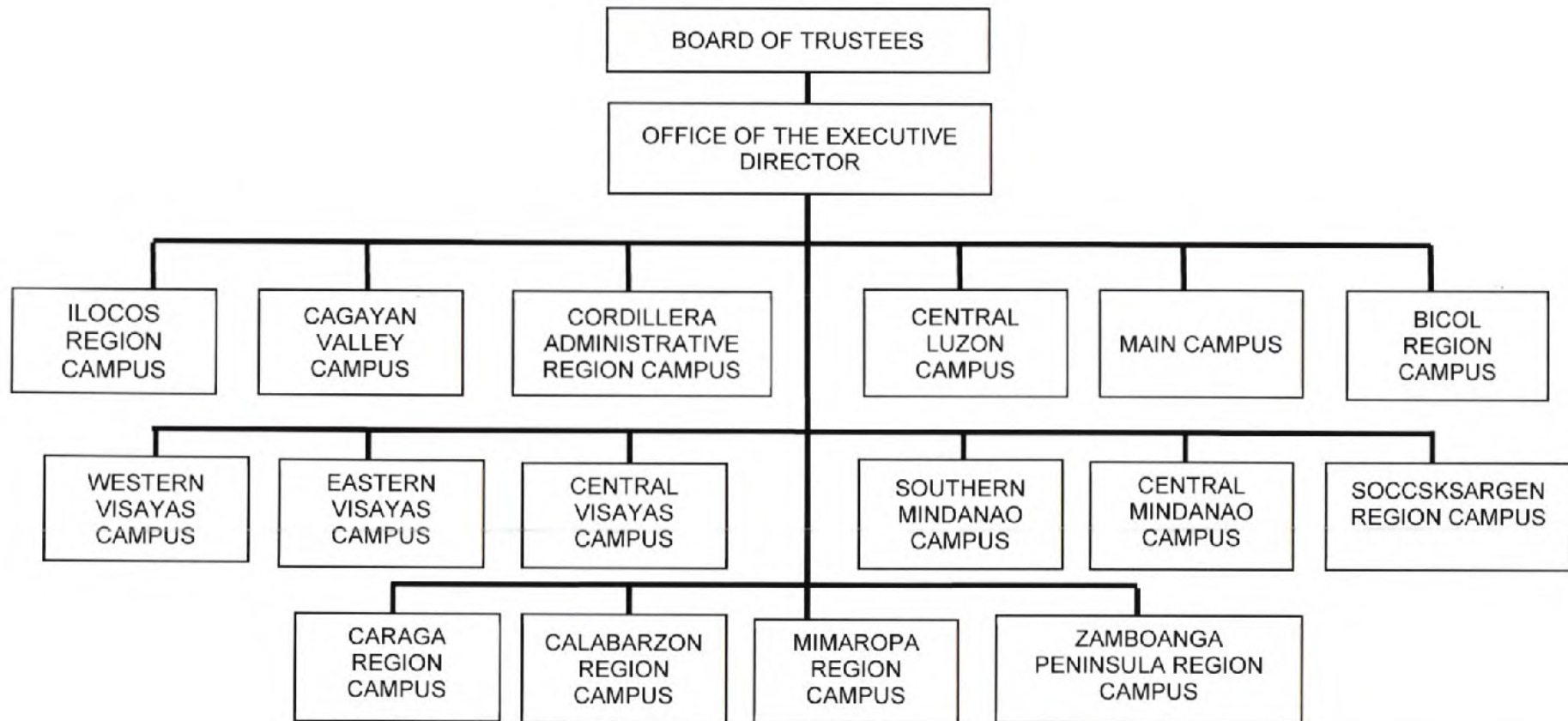



VERSION NO. 1	MANUAL TITLE <b>QUALITY MANUAL</b>	DOCUMENT NO. <b>QM 3.4</b>
	DOCUMENT NAME <b>PSHSS ORGANIZATIONAL CHART</b>	REVISION NO. <b>02</b>
		EFFECTIVITY DATE <b>NOVEMBER 19, 2018</b>
		PAGE NO. <b>1 of 5</b>

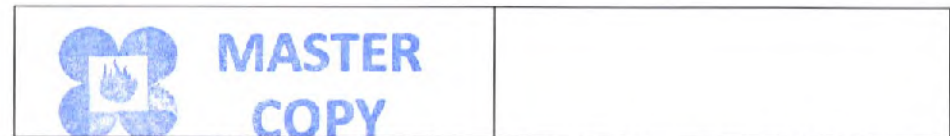
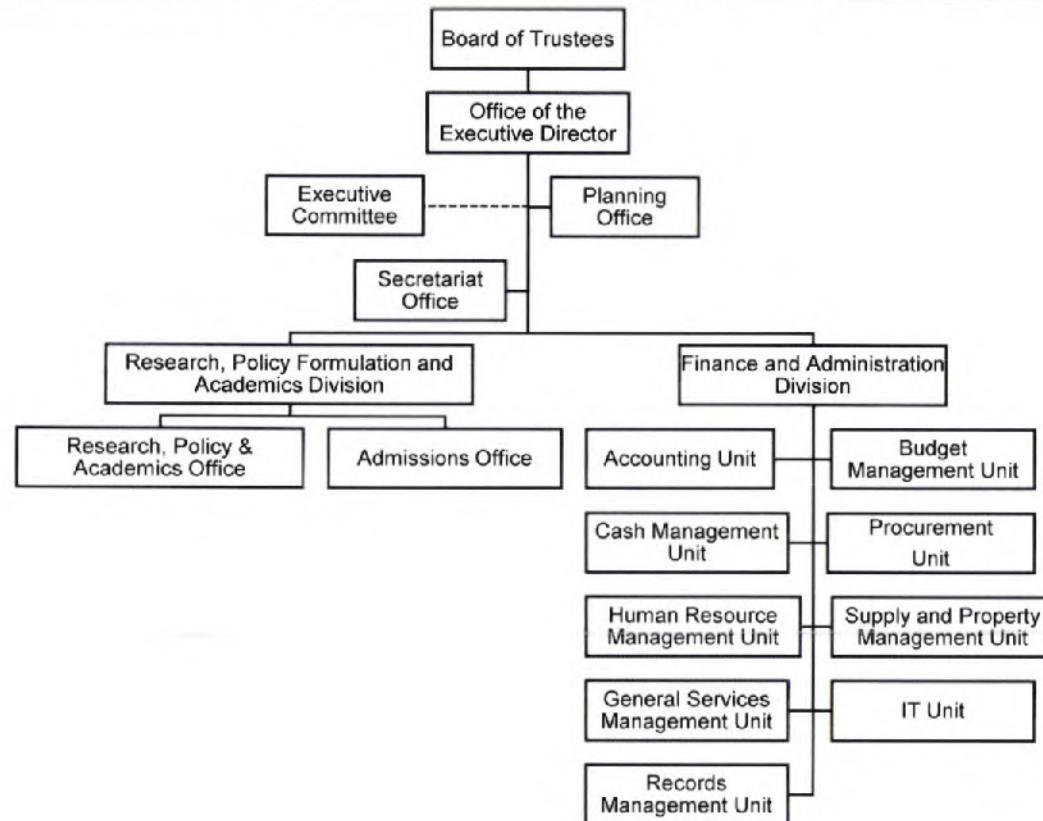
**THE PSHS SYSTEM**




**MASTER  
COPY**

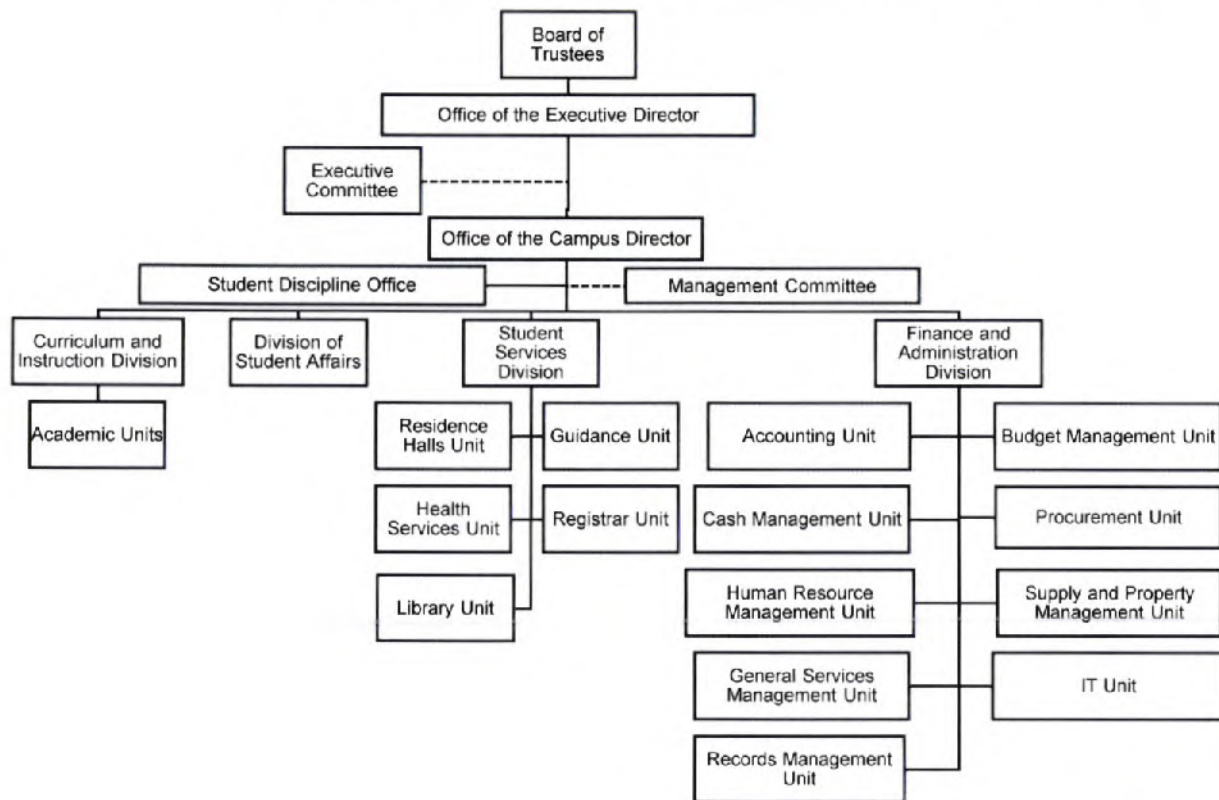
VERSION NO. 1	MANUAL TITLE <b>QUALITY MANUAL</b>	DOCUMENT NO. <b>QM 3.4</b>
	DOCUMENT NAME <b>PSHSS ORGANIZATIONAL CHART</b>	REVISION NO. <b>02</b>
		EFFECTIVITY DATE <b>NOVEMBER 19, 2018</b>
		PAGE NO. <b>2 of 5</b>

**THE OFFICE OF THE EXECUTIVE DIRECTOR ORGANIZATIONAL CHART**




VERS . 1	MANUAL TITLE <b>QUALITY MANUAL</b>	DOCUMENT NO. <b>QM 3.4</b>
	DOCUMENT NAME <b>PSHSS ORGANIZATIONAL CHART</b>	REVISION NO. <b>02</b>
		EFFECTIVITY DATE <b>NOVEMBER 19, 2018</b>
		PAGE NO. <b>3 of 5</b>

### THE PSHS MAIN CAMPUS ORGANIZATIONAL CHART

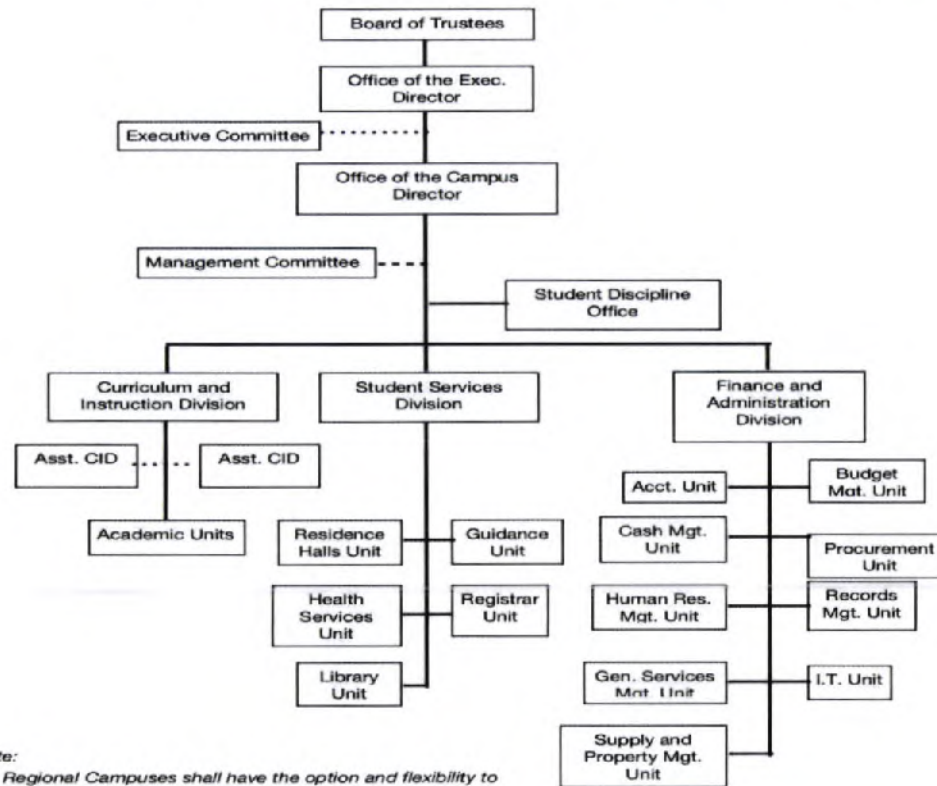


**MASTER  
COPY**




VERSION NO. 1	MANUAL TITLE <b>QUALITY MANUAL</b>	DOCUMENT NO. <b>QM 3.4</b>
	DOCUMENT NAME <b>PSHSS ORGANIZATIONAL CHART</b>	REVISION NO. <b>02</b>
		EFFECTIVITY DATE <b>NOVEMBER 19, 2018</b>
		PAGE NO. <b>4 of 5</b>

**THE PSHS REGIONAL CAMPUS ORGANIZATIONAL CHART**



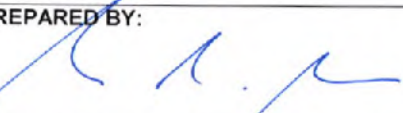


*Note:*  
 - Regional Campuses shall have the option and flexibility to designate one (1) or two (2) Assistant Chief under the CID (Ref. BOT 2016-07-94). A student affairs officer may also be designated (Ref. BOT 2017-01-18)



VERSION NO. 1	MANUAL TITLE <b>QUALITY MANUAL</b>	DOCUMENT NO. <b>QM 3.4</b>
	DOCUMENT NAME  <b>PSHSS ORGANIZATIONAL CHART</b>	REVISION NO. <b>02</b>
		EFFECTIVITY DATE <b>NOVEMBER 19, 2018</b>
		PAGE NO. <b>5 of 5</b>

## REVISION HISTORY

DCR No.	Section	Amendment/s	Revision No.	Implementation Date
		-Initial Implementation-	0	December 5, 2016
18-00-040	Campus Organizational Chart	Modified the Organizational Chart for Main Campus and Regional Campuses	01	October 24, 2018
18-00-044	Office of the Executive Director Organizational Chart	Research Policy and Academics Division to have two units: Research, Policy and Academics Office and Admissions Office	02	November 19, 2018
	Regional Campus Organizational Chart	Deleted the 'Planning Office' in the Organizational Structure for Campuses		
	Revision History	Added entry in the Section portion for revision no. 01		

PREPARED BY: 	APPROVED BY: 	 <b>MASTER COPY</b>	
---	---	--	--